



BEVERAGE-AIR

Project: _____	AIA# _____
Item: _____	
Location: _____	SIS# _____
Approved: _____	

MARKETMAX REFRIGERATOR

MMR45HC Black Sliding Glass Door Model
Hydrocarbon Series

MODELS:
MMR45HC-1-B



MMR45HC-1-B

OPTIONS & ACCESSORIES

- ☐ White or stainless steel exterior option
- ☐ Black or stainless steel interior option
- ☐ Wine models available
- ☐ Wine thermometer
- ☐ Shelves black or white
- ☐ Stainless steel clips
- ☐ Flow track
- ☐ Gravity track
- ☐ Price tag molding
- ☐ 6" legs
- ☐ 3" or 6" Casters
- ☐ Door locks
- ☐ Custom signage & decals
- ☐ Remote option

3 Year Parts/Labor Warranty
Additional 2 Year Compressor Warranty

CABINET CONSTRUCTION

- Standard cabinet exterior finish is heavy duty steel with a black baked on durable coating
- Heavy duty interior construction includes white coated steel walls
- Full electronic control
- Modern one piece grille
- Double pane lowE argon filled glass doors feature inside and outside panes that are tempered for added safety
- Sliding glass door models have black frames regardless of exterior finish
- Hold open feature is standard
- Ten (10) heavy duty epoxy coated wire shelves
- Brightly lighted sign panel
- LED lighting
- Maintains product temperatures between 36°F and 38°F

REFRIGERATION SYSTEM

- Refrigeration system uses R290 refrigerant to comply with all environmental concerns
- Automatic, non-electric defrost
- Epoxy coated evaporator coil

MMR45HC Marketmax Refrigerator: Sliding Glass Doors



3779 Champion Blvd., Winston-Salem, NC 27105
1-888-845-9800 Fax: 1-336-245-6453
Beverage-Air.com sales@bevair.com

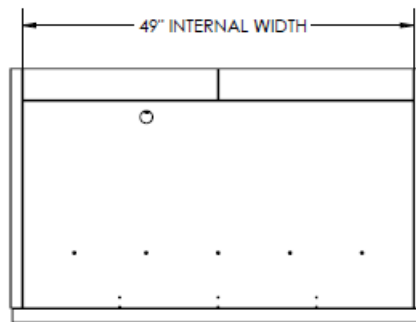


BEVERAGE-AIR

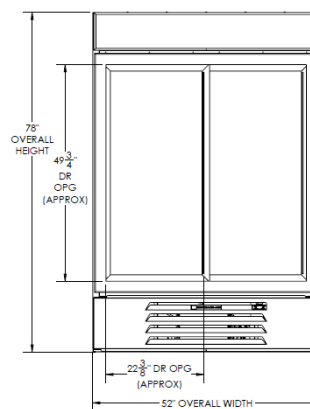
MODEL	MMR45HC-1-B
EXTERNAL DIMENSIONAL DATA	
Width Overall	52"
Depth Overall	32 1/4"
Height Overall	78"
Number of Doors	2
INTERNAL DIMENSIONAL DATA	
NET Capacity (cubic ft.)	44
Internal Width Overall (in)	49"
Internal Depth Overall (in)	26"
Internal Height Overall (in)	61 5/8"
Internal Height Useable (in)	53"
Number of Shelves	10
ELECTRICAL DATA	
Full Load Amperes 115/60/1	5
REFRIGERATION DATA	
Horsepower	1/3
Capacity (BTU/Hr)*	2392
WEIGHT DATA	
Gross Weight (Crated lbs)	555 lbs
Height - Crated	85"
Width - Crated	54"
Depth - Crated	36"

Glass Door Merchandisers - Sliding Door Models Models: MMR45HC-1-B

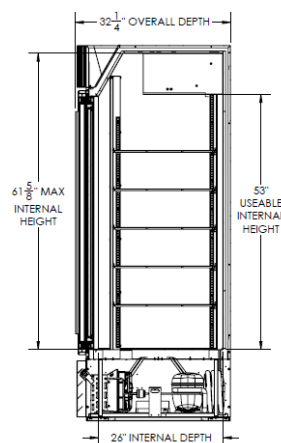
Model Views



Plan View



Elevation View



Side View

ELECTRICAL CONNECTION



115/60/1
NEMA-5-15P

Units pre-wired at
factory and include 8'
long cord and plug set.



an Ali Group Company



The Spirit of Excellence

3779 Champion Blvd., Winston-Salem, NC 27105
1-888-845-9800 Fax: 1-336-245-6453
Beverage-Air.com sales@bevair.com