



# BEVERAGE-AIR®

|                |      |
|----------------|------|
| Project:.....  | AIA# |
| Item:.....     |      |
| Location:..... | SIS# |
| Approved:..... |      |

PRT1HC TOP MOUNT ROLL-THRU REFRIGERATOR

## P-SERIES TOP MOUNT ROLL-THRU REFRIGERATOR

PRT1HC-1AS Solid Door Refrigerator  
Hydrocarbon Series

MODEL:  
PRT1HC-1AS



**3 Year Parts/Labor Warranty**  
**Additional 4 Year Compressor Warranty**

### CABINET CONSTRUCTION

- Exterior stainless steel front and side (galvanized top, bottom)
- Interior is made of corrosion resistant aluminum
- Full electronic control
- Expansion valve technology
- Variable speed compressor technology
- Self-closing door with 120° stay-open feature
- Stainless steel door liners
- 22 Gauge stainless steel doors
- LED interior light
- Heavy-duty cylinder locks
- Snap-in magnetic gaskets for positive door seal
- Hinged front shroud
- Reinforced stainless steel door ramps
- Internal cart guides
- Accepts carts up to 24 3/8" (W) x 26" (D) x 64 1/2" (H)  
(Cart not included)
- Wiper gasket at bottom of door seals door to ramp
- Energy saving thermal breaker
- Stainless steel breaker caps
- 8' Cord and plug (see electrical data for details)

### OPTIONS & ACCESSORIES

- Stainless steel interior
- Door swing orientation (at time of order)

### REFRIGERATION SYSTEM

- Uses environmentally friendly, energy efficient R290 refrigerant, and meets all regulatory requirements for CARB, SNAP, DOE & more
- Adaptive defrost
- Epoxy coated evaporator coil, located out of the food zone
- Refrigerator capable of maintaining product temperature 36°F to 38°F



Please verify qualifying units by visiting:  
[www.energystar.gov/cfs](http://www.energystar.gov/cfs)

3779 Champion Blvd., Winston-Salem, NC 27105  
1-888-845-9800 Fax: 1-336-245-6453  
Beverage-Air.com Sales@beva.com



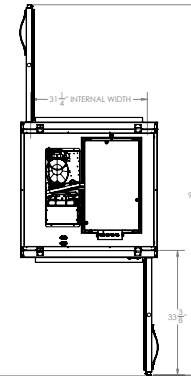
# BEVERAGE-AIR®

| MODEL                        | PRT1HC-1AS                |
|------------------------------|---------------------------|
| EXTERNAL DIMENSIONAL DATA    |                           |
| Width Overall                | 36 1/2"                   |
| Depth Overall with Handle    | 39 3/4"                   |
| Height Overall               | 84 3/8"                   |
| Number of Doors              | 2                         |
| Between Cart Guides          | 26 3/4"                   |
| Depth with Door Open 90°     | 99"                       |
| Door Opening (in)            | 27 7/8" x 65 3/8"         |
| INTERNAL DIMENSIONAL DATA    |                           |
| NET Capacity (cubic ft.)     | 38.69                     |
| Internal Width Overall (in)  | 31 1/4"                   |
| Internal Depth Overall (in)  | 26"                       |
| Internal Height Overall (in) | 66 1/4"                   |
| ELECTRICAL DATA              |                           |
| Full Load Amperes 115/60/1   | 8.5                       |
| REFRIGERATION DATA           |                           |
| Horsepower                   | 3/4                       |
| Capacity (BTU/Hr)            | Variable Speed Technology |
| SHIPPING DATA                |                           |
| Gross Weight - Crated        | 500 lbs                   |
| Height - Crated              | 92"                       |
| Width - Crated               | 45"                       |
| Depth - Crated               | 45"                       |

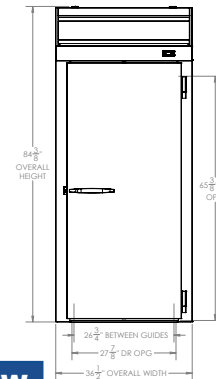
## Top Mount Roll-Thru Refrigerator Model: PRT1HC-1AS

### Model Views

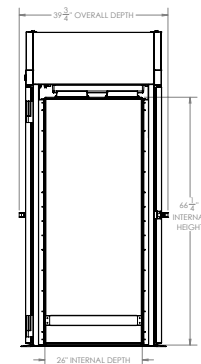
Required Clearance: Top 12"



### PLAN VIEW



### ELEVATION VIEW



### SIDE VIEW

## ELECTRICAL CONNECTION



115/60/1  
NEMA 5-15P Unit pre-wired at factory and include 8' long cord and plug set.



3779 Champion Blvd., Winston-Salem, NC 27105 1-888-845-9800 Fax: 1-336-245-6453 Beverage-Air.com Sales@bevair.com

an Ali Group Company



The Spirit of Excellence