



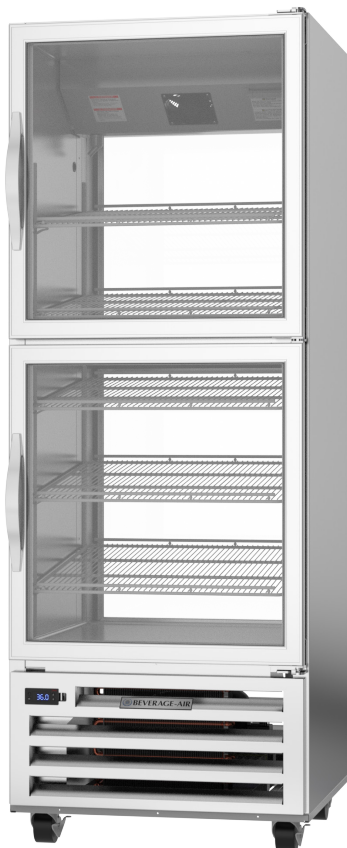
BEVERAGE-AIR®

Project: _____	AIA# _____
Item: _____	
Location: _____	SIS# _____
Approved: _____	

RI REACH-IN / PASS-THRU REFRIGERATOR

RID18HC Half Glass Door Bottom Mount Refrigerator
Hydrocarbon Series

MODEL:
RID18HC-HG



3 Year Parts/Labor Warranty
Additional 4 Year Compressor Warranty

CABINET CONSTRUCTION

- Stainless steel exterior and interior
- Full electronic control
- Interior LED Light
- Five (5) shelves standard
- One piece grille
- Cartridge style hinges
- 120° Hold open feature
- Snap-in magnetic door gasket
- 3" Heavy duty casters with two brakes standard
- Maintains temperature between 36° and 38°F

OPTIONS & ACCESSORIES

- Epoxy shelves & clips
- 6" Casters or 6" leg optional
- Wire shelf dividers
- Right or left hinged door
- Remote option (see note on back page)

REFRIGERATION SYSTEM

- Refrigeration system uses R290 refrigerant to comply with all environmental concerns
- Automatic, non-electric defrost
- Epoxy coated evaporator coil

RID18HC BOTTOM MOUNT REACH-INS: PASS-THRU SERIES



3779 Champion Blvd., Winston-Salem, NC 27105
1-888-845-9800 Fax: 1-336-245-6453
Beverage-Air.com Sales@bevair.com

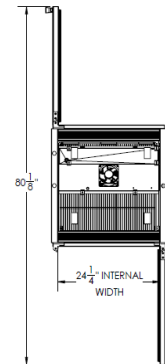


BEVERAGE-AIR®

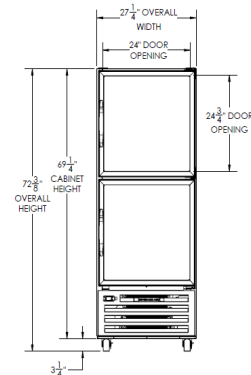
MODEL	RID18HC-HG
EXTERNAL DIMENSIONAL DATA	
Width Overall	27 1/4"
Depth Overall	32 5/8"
Height Overall	72 3/8"
Number of Doors	4
Depth with Door Open 90°	80 1/8"
Door Opening (in)	24" X 24 3/4"
INTERNAL DIMENSIONAL DATA	
NET Capacity (cubic ft.)	18.38
Internal Width Overall (in)	24 1/4"
Internal Depth Overall (in)	25 1/8"
Internal Height Overall (in)	Max 53"
Number of Shelves	5
ELECTRICAL DATA	
Full Load Amperes 115/60/1	5.5
REFRIGERATION DATA	
Horsepower	1/4
Capacity (BTU/HR)	1997
WEIGHT DATA	
Gross Weight - Crated	422 lbs
Height - Crated	75"
Width - Crated	35"
Depth - Crated	35"

Bottom Mount Reach-In Pass-Thru Half Glass Door Model: RID18HC-HG

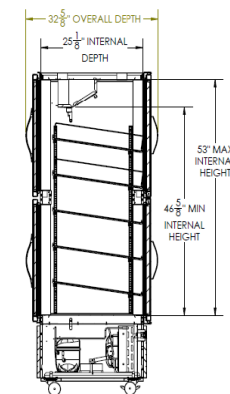
Model Views



PLAN VIEW



ELEVATION VIEW



SIDE VIEW

ELECTRICAL CONNECTION



115/60/1
NEMA-5-15P

Unit pre-wired at factory
and include 8' long cord
and plug set.



an Ali Group Company



The Spirit of Excellence

3779 Champion Blvd., Winston-Salem, NC 27105
1-888-845-9800 Fax: 1-336-245-6453
Beverage-Air.com Sales@bevair.com