



# BEVERAGE-AIR®

Project: \_\_\_\_\_  
Item: \_\_\_\_\_  
Location: \_\_\_\_\_  
Approved: \_\_\_\_\_

AIA#

SIS#

## BOTTLE COOLERS

SF34HC Shallow Well Series  
Hydrocarbon Series

MODEL:  
SF34HC-S



**3 Year Parts/Labor Warranty**  
**Additional 2 Year Compressor Warranty**

### CABINET CONSTRUCTION

- Stainless steel exterior
- Door and top is stainless steel
- Standard interior construction utilizes galvanized steel
- Easy glide lid
- Raised countertop includes an integrated edge stop
- Two (2) epoxy coated adjustable wire dividers
- Bottle cap & cap catcher standard

### OPTIONS & ACCESSORIES

- Black embossed steel exterior
- Stainless steel interior
- Lid Locks
- Remote Models\*  
(see note on back on page)

### REFRIGERATION SYSTEM

- Uses environmentally friendly, energy efficient R290 refrigerant, and meets all regulatory requirements for CARB, SNAP, DOE & more
- Adaptive defrost
- Forced air refrigeration system holds products between 36°F to 40°F

**SF34HC BOTTLE COOLER**



  
Please verify qualifying units by visiting:  
[www.energystar.gov/cfs](http://www.energystar.gov/cfs)

3779 Champion Blvd., Winston-Salem, NC 27105  
1-888-845-9800 Fax: 1-336-245-6453  
Beverage-Air.com Sales@bevair.com



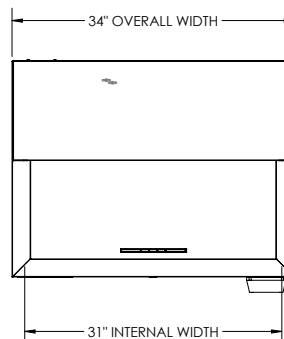
# BEVERAGE-AIR

MODEL	SF34HC-S
<b>EXTERNAL DIMENSIONAL DATA</b>	
Width Overall	34"
Depth Overall	28"
Height Overall	33 5/8"
Number of Lids	1
<b>INTERNAL DIMENSIONAL DATA</b>	
NET Capacity (cubic ft.)	6.7
Internal Width Overall (in)	31"
Internal Depth Overall (in)	22 3/4"
Internal Useable Height Overall (in)	12 1/4"
<b>ELECTRICAL DATA</b>	
Full Load Amperes	1.2
<b>REFRIGERATION DATA</b>	
Horsepower*	1/10
Capacity (BTU/Hr)*	1110
<b>WEIGHT DATA</b>	
Gross Weight	215 lbs
Height - Crated	40"
Width - Crated	30"
Depth - Crated	38"

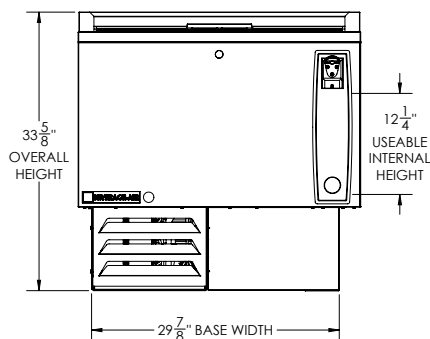
\*NOTE: Remote units are field wired and come with 6" legs. Refrigerant must be specified at time of order.

## BOTTLE COOLER Model: SF34HC-S

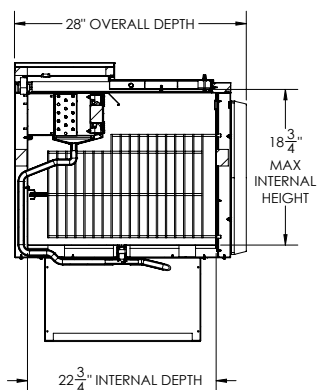
### Model Views



### PLAN VIEW



### ELEVATION VIEW



### SIDE VIEW

### \*ELECTRICAL CONNECTION



115/60/1  
NEMA-5-15P

Units pre-wired at factory and include 8' long cord and plug set.



3779 Champion Blvd., Winston-Salem, NC 27105 1-888-845-9800 Fax: 1-336-245-6453 Beverage-Air.com Sales@bevair.com

an Ali Group Company



The Spirit of Excellence