



BEVERAGE-AIR

Project: _____	AIA# _____
Item: _____	
Location: _____	SIS# _____
Approved: _____	

WTF WORKTOP 32" Base

WTF48AHC Worktop Freezer

Hydrocarbon Series

MODELS:
WTF48AHC



WTF48AHC

3 Year Parts/Labor Warranty
Additional 4 Year Compressor Warranty

CABINET CONSTRUCTION

- Stainless steel front, sides, door(s), (*galvanized steel back & bottom*)
- Interior liner is made of corrosion resistant aluminum
- Full electronic control
- 2 1/2" Stainless steel worktop for added durability
- Built-in backsplash
- 100% Front breathing
- Self-closing doors with 120° Stay-open feature, on cartridge style hinges
- Easy door removal for service and cleaning
- Magnetic gasket attached to each door for positive seal
- Painted aluminum door handle
- 6" Casters, two with brakes standard
- Two epoxy-coated steel wire shelves per section standard
- Field-reversible doors

OPTIONS & ACCESSORIES

- ☐ Stainless steel back and grille
- ☐ Drawers models
- ☐ Door with locks
- ☐ 6" Legs
- ☐ 3" Casters
- ☐ Low profile casters
- ☐ Cutting board option
- ☐ Shelf dividers
- ☐ Overshelf kits
- ☐ Foot pedal door opener

REFRIGERATION SYSTEM

- Refrigeration system uses R290 refrigerant to comply with all environmental concerns
- Automatic, non-electric evaporator
- System is serviceable from rear
- Epoxy coated evaporator coil

WTF48AHC 32" Base Freezer: Food Prep Series



3779 Champion Blvd., Winston-Salem, NC 27105
1-888-845-9800 Fax: 1-336-245-6453
Beverage-Air.com sales@bevair.com



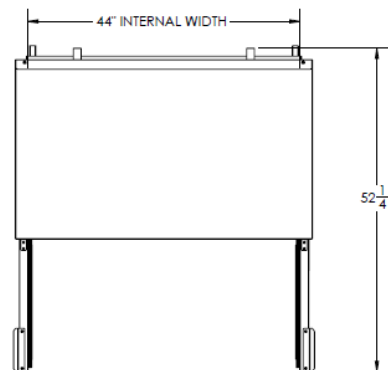
BEVERAGE-AIR

MODEL	WTF48AHC
EXTERNAL DIMENSIONAL DATA	
Width Overall	48"
Depth Overall with Handle & Bumper	32"
Height Overall with 6" Casters	39 5/8"
Number of Doors	2
Depth with Door Open 90 °	52 1/4"
Solid Door Opening (in)	19 5/8 x 21 5/8"
Shelf Area (sq. in)	Upper 344 33/64" Lower 302 3/4"
INTERNAL DIMENSIONAL DATA	
NET Capacity (cubic ft.)	11.04
Internal Width Overall (in)	44"
Internal Depth Overall (in)	15 3/8"
Internal Height Overall (in)	23"
Number of Shelves	4
ELECTRICAL DATA	
Full Load Amperes 115/60/1	7
REFRIGERATION DATA	
Horsepower	1/2
Capacity (BTU/Hr)*	1861
WEIGHT DATA	
Gross Weight	294 lbs
Height - Crated	43 1/2"
Width - Crated	30"
Depth - Crated	32 1/4"

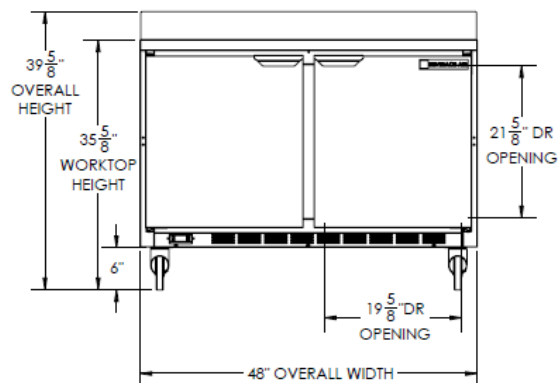
Worktop Freezer - 32" Base

Models: WTF48AHC

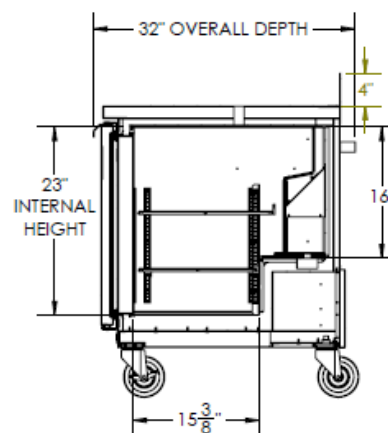
Model Views



Plan View



Elevation View



Side View

ELECTRICAL CONNECTION



115/60/1
NEMA-5-15P

Units pre-wired at
factory and include 8'
long cord and plug set.



an Ali Group Company



The Spirit of Excellence

3779 Champion Blvd., Winston-Salem, NC 27105
1-888-845-9800 Fax: 1-336-245-6453