



# BEVERAGE-AIR

|                 |            |
|-----------------|------------|
| Project: _____  | AIA# _____ |
| Item: _____     |            |
| Location: _____ | SIS# _____ |
| Approved: _____ |            |

## WTRD REFRIGERATOR WITH DRAWERS

WTRD48AHC Two Drawer Worktop Refrigerator  
Hydrocarbon Series

MODELS:  
WTRD48AHC-2



WTRD48AHC-2

**3 Year Parts/Labor Warranty**  
**Additional 2 Year Compressor Warranty**

### CABINET CONSTRUCTION

- Stainless steel front, sides door and drawers (*galvanized back & bottom*)
- Interior liner is made of corrosion resistant aluminum
- Stainless steel worktop for added durability
- Full electronic control
- Interior thermometer is standard
- 4" Removable backsplash for flexibility and ease of cleaning
- Painted aluminum door and drawer handles
- Two (2) epoxy coated shelves
- Snap-in door and drawer gaskets
- Upper and lower pull-out drawers accommodate 6" deep pans
- Stainless steel drawer frames supported on telescoping drawer slides
- Drawer slides include locking mechanism that prevents drawer from being inadvertently pulled off cabinet
- 6" Casters, (2) with brakes standard
- Maintains product temperature between 36°F and 38°F

### OPTIONS & ACCESSORIES

- ☐ Stainless steel back and grille
- ☐ Stainless steel interior
- ☐ Right or left hinged door
- ☐ Locks (solid doors only)
- ☐ Bun rack
- ☐ Wire shelf divider
- ☐ Cutting board
- ☐ Thermometer digital or stem type dial
- ☐ 3" Casters or 6" legs
- ☐ Low profile casters
- ☐ Remote option

### REFRIGERATION SYSTEM

- Refrigeration system uses R290 refrigerant to comply with all environmental concerns
- Automatic, non-electric defrost
- Epoxy coated evaporator coil

WTRD48AHC-2 Refrigerators With Drawers: Worktop Series

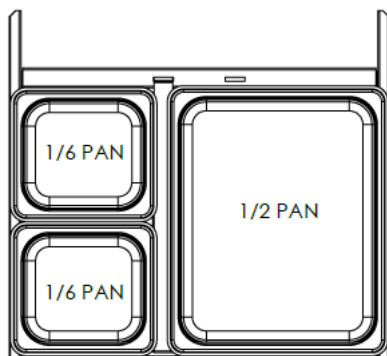


3779 Champion Blvd., Winston-Salem, NC 27105  
1-888-845-9800 Fax: 1-336-245-6453  
Beverage-Air.com sales@bevair.com



# BEVERAGE-AIR

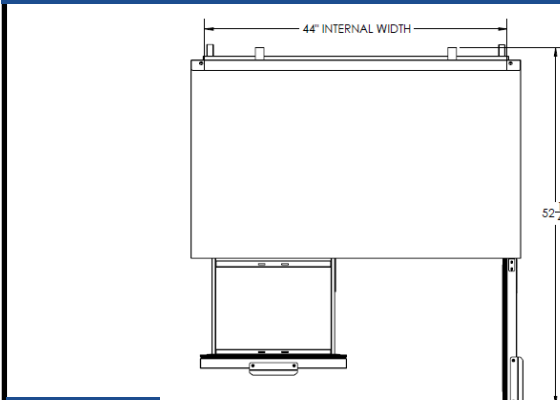
| MODEL                            | WTRD48AHC-2                                       |
|----------------------------------|---|
| <b>EXTERNAL DIMENSIONAL DATA</b> |   |
| Width Overall                    | 48"   |
| Depth Overall                    | 32"   |
| Height Overall with 6" Casters   | 39 5/8"   |
| Number of Doors                  | 1   |
| Depth with Door Open 90 °        | 52 1/4"   |
| Depth of Drawer Open (in)        | Upper 19 5/8" x 11 1/4"<br>Lower 19 5/8" x 7 1/2" |
| Number of Drawers                | 2   |
| <b>INTERNAL DIMENSIONAL DATA</b> |   |
| NET Capacity (cubic ft.)         | 11.82   |
| Internal Width Overall (in)      | 44"   |
| Internal Depth Overall (in)      | 23 1/2"   |
| Internal Depth Useable (in)      | Upper 18 1/2"<br>Lower 15 3/8"                    |
| Internal Height Overall (in)     | 23"   |
| Number of Shelves                | 2   |
| <b>ELECTRICAL DATA</b>           |   |
| Full Load Amperes 115/60/1       | 2.2   |
| <b>REFRIGERATION DATA</b>        |   |
| Horsepower                       | 1/6   |
| Capacity (BTU/Hr)*               | 1094  |
| <b>WEIGHT DATA</b>               |   |
| Gross Weight (Crated lbs)        | 282 lbs   |
| Height - Crated                  | 35"   |
| Width - Crated                   | 51"   |
| Depth - Crated                   | 33"   |



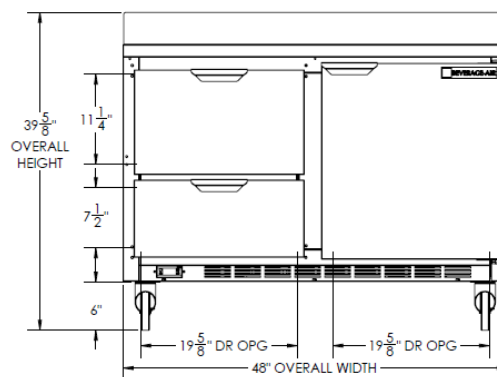
## Worktop Refrigerators – With Drawers

Models: WTRD48AHC-2

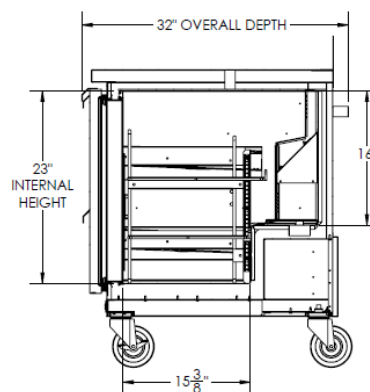
### Model Views



Plan View



Elevation View



Side View

### ELECTRICAL CONNECTION



115/60/1  
NEMA-5-15P

Units pre-wired at factory and include 8' long cord and plug set.



an Ali Group Company



The Spirit of Excellence

3779 Champion Blvd., Winston-Salem, NC 27105  
1-888-845-9800 Fax: 1-336-245-6453  
Beverage-Air.com sales@bevair.com