



# DCM-700BAK-OS

## OPTI-SERVE SERIES SANITARY CUBELET ICE MACHINE/DISPENSER



DCM-700BAK-OS  
08/13/25  
Item # 13291K

Item #: \_\_\_\_\_  
Project: \_\_\_\_\_  
Qty: \_\_\_\_\_  
AIA#: \_\_\_\_\_

**W x D x H**  
34<sup>1/16"</sup> x 28<sup>1/2"</sup> x 48<sup>1/16"</sup>

**SD-750**  
34" x 28" x 32<sup>3/4"</sup>

Ice Machine Shipping Dimensions  
39<sup>3/4"</sup> x 32<sup>1/2"</sup> x 53<sup>1/2"</sup>

**DCM-700BAK-OS**  
Air-Cooled  
Shown with optional  
SD-750 Stand



Hands-free sensor designed for use  
with opaque containers.

Not intended for outdoor use -  
avoid placement in direct sunlight.



## Features

- ▶ Durable stainless steel exterior
- ▶ Opti-Serve touchless ice and water
- ▶ Environmentally friendly R290 hydrocarbon refrigerant
- ▶ Stainless steel auger with greaseless bearing

- Up to 719 lbs. of ice production per 24 hours
- Built-in storage capacity of 3.2ft<sup>3</sup>/95 lbs. \* ADVANCED
- Advanced CleanCycle24™ design 2 CleanCycle
- 2-second flush cycle every hour
- Easy to chew, Cubelet ice
- Self-contained design reducing opportunities for cross contamination
- Flush cycle removes sediment for cleaner ice
- Removable air filters (air-cooled model only)
- Dispenses ice and water

### Warranty:

3 Year Parts & Labor on entire machine.  
5 Year Parts on Compressor; air-cooled condenser coil.  
Valid in United States, Canada, Puerto Rico and U.S. Territories. Contact factory for warranty in other countries.

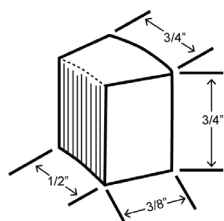
\* Rated in accordance with AHRI Standard 820(I-P). Capacity based on 100% of total volume x 30 lb/ft<sup>3</sup> average density of ice.



### ICE PRODUCTION      WATER USAGE      ELECTRICAL

Condenser	Model	Air / Water Temp Lbs. per 24 hours		Potable Gal. per 100 lbs.	Condenser Gal. per 100 lbs.	kWh Used per 100 lbs.	Min. Circuit/Max. Fuse Size	Amperage	Voltage	Circuit Wires (including ground)	Heat Rejection BTU/hr.	Refrigerant Charge Amount	Net / Ship Weight (lbs.)
		70°/ 50°F	90°/ 70°F	90°/ 70°F	90°/ 70°F	90°/ 70°F							
Air-Cooled	DCM-752BAK-OS	719	580	12.0	N/A	4.87	20A	11.2A	115V/60/1	3	7,400	5.3 oz.	300 / 345

### Cubelet Dimensions\*



\* approximate size in inches, image not to scale

### Operating Limits

- Ambient Temp Range 45 - 100°F
- Water Temp Range 45 - 90°F
- Water Pressure 10 - 113 PSIG
- Voltage Range 108 - 127V
- If GFCI is required, a GFCI breaker MUST be used in lieu of GFCI receptacle

### Service

- Allow 6" (15 cm) clearance at rear and sides for proper air circulation and ease of maintenance/service should they be required. Allow 24" (61 cm) clearance at top to allow for removal of the auger

Not intended for outdoor use - avoid placement in direct sunlight.

### Plumbing

- Icemaker Water Supply Line: Min. 1/4" Nominal ID Copper Water Tubing or Equivalent
- Icemaker Drain Line: Min. 3/4" Nominal ID Hard Pipe or Equivalent Water-Cooled Model (Lines Must Be Independent of Icemaker)
- Condenser Water Supply Line: Min. 1/4" Nominal ID Copper Water Tubing or Equivalent
- Condenser Drain/Return Line: Min. 1/4" Nominal ID Hard Pipe (open drain system) or Copper Water Tubing (closed loop system) or Equivalent

### Water Filter

Please refer to water filter specification sheet for recommendations.

Hoshizaki reserves the right to change specifications without notice.



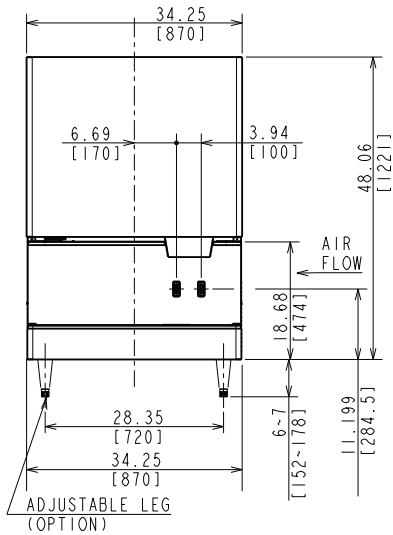
# DCM-700BAK-OS

OPTI-SERVE SERIES  
SANITARY CUBELET ICE MACHINE/DISPENSER

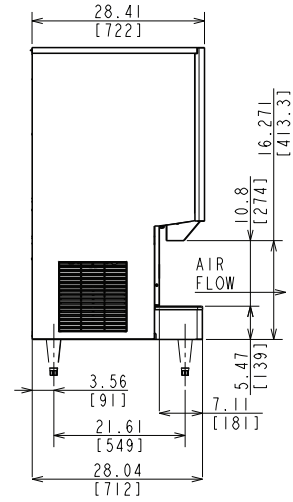
DCM-700BAK-OS  
08/13/25  
Item # 13291K

inch  
[mm]

FRONT VIEW

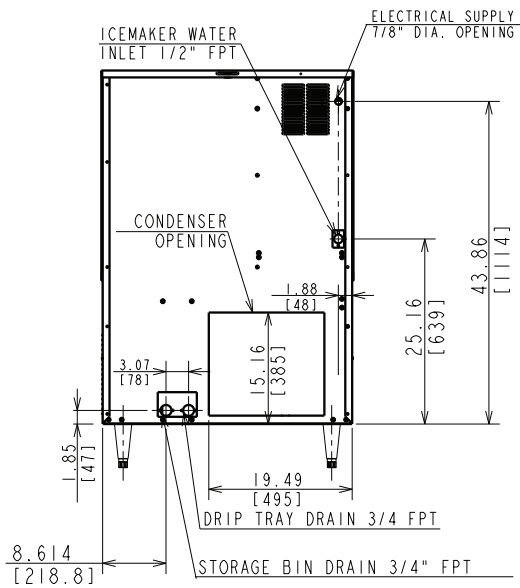


SIDE VIEW

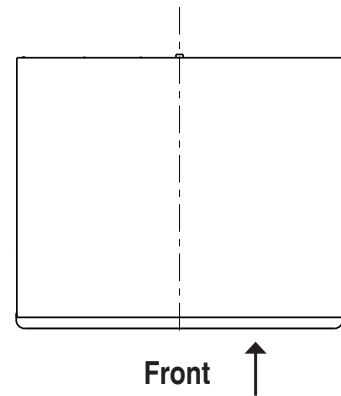


Front  
←

REAR VIEW



TOP VIEW



Front  
↑