



PF16E

Project Name: _____ AIA#: _____

Model #: _____ Location: _____

SIS#: _____ Item #: _____ Quantity: _____

Electric Countertop Fryers

Models

- PF10E - 10 lb. Oil Capacity Fryer
- PF16E - 16 lb. Oil Capacity Fryer
- PF32E - 32 lb. Oil Capacity Fryer



Quality Construction

- All stainless steel construction
- Removable, stainless steel fry pot with handles
- Easy to remove and clean control box and swing-up elements
- Nickel-plated fry baskets with cool-to-touch insulated handles

Standard Features

- 70°F – 375°F thermostat
- High temp thermal limit control with manual reset
- 3½" stainless steel adjustable feet
- Built-in basket nesting hooks
- Attached 4-foot power cord and plug (dual power cords and plugs on the PF32E)

Oil Capacity

Model: PF10E - Oil Capacity = 10 lbs.

Model: PF16E - Oil Capacity = 16 lbs.

Model: PF32E - Oil Capacity = 32 lbs.
(dual tank)

Applications

- Designed for light duty cooking
- Produces 10 to 50 lbs. of fries per hour – frozen to finish – depending on model

Frying Capacity

Model: PF10E - Fries per hour = 10 lbs.

Model: PF16E - Fries per hour = 25 lbs.

Model: PF32E - Fries per hour = 50 lbs.

Standard Accessories

- (2) Nickel-plated baskets

Warming Temp Rates

- 7-10 minutes for initial oil warm up
- Oil recovery after each batch ~5 minutes (rate may vary with chilled/frozen foods)

Optional Accessories

- Interchangeable 16 lb. and 32 lb. baskets
 - Small basket - SMBASKET10
 - Large basket - TMBASKET1632
 - Twin baskets - LGBASKET1632
- Fryer covers
 - FRYERCOVER1016
 - FRYERCOVER32(For use only when fryer is not operational)

Warranty

- One-year parts and labor

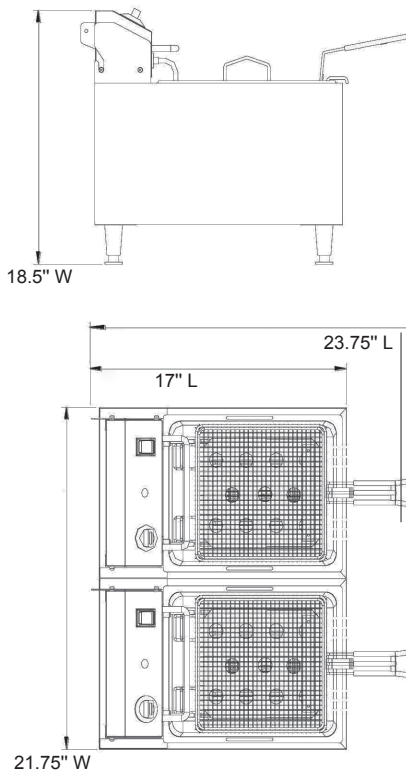
Approved by: _____ Date: _____



Electric Countertop Fryers

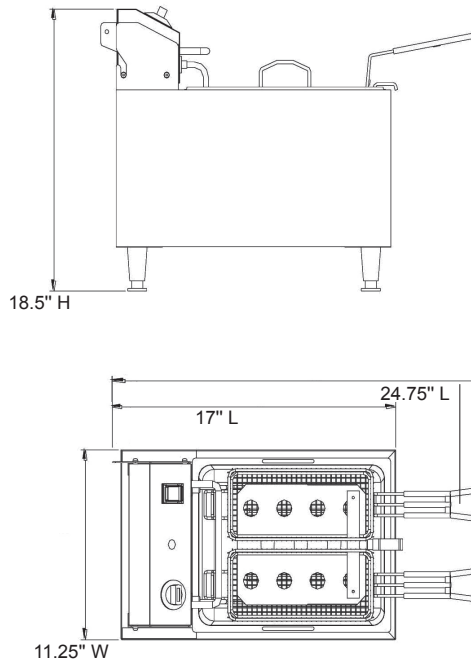
PF10E / PF16E / PF32E

PF32E



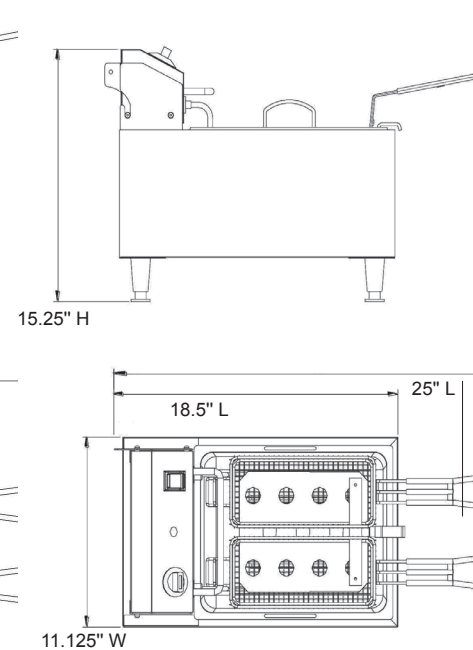
Oil Pan: 9.375" W x 11.75" L x 8" H
Basket Size: 8" W x 7.75" D x 6" H

PF16E



Oil Pan: 9.375" W x 11.75" L x 8" H
Basket Size: 4" W x 9" D x 6" H

PF10E



Oil Pan: 9.375" W x 11.75" L x 5.875" H
Basket Size: 4" W x 9" D x 4" H

For Indoor Use Only

SPECIFICATIONS

- All models come with two baskets. See basket sizes above

- Thermostat: Maintains oil/fat temperature for cooking from 70°F - 375°F.
- Thermal Limit Control HIGH TEMP: Detects high temperature limits and automatically shuts off the fryer.

Model	Food Capacity	Oil Capacity	# of Tanks	Electric	Wattage	AMPs	NEMA Plug Type
PF10E	~ 10 lbs per hour	10 lbs.	1	120V	1700 W	14	(1) 5-15P U.S.A. (1) 5-20P Canada
PF16E	~ 25 lbs per hour	16 lbs.	1	208-240V	2900W 3800W	13.9 15.8	(1) 6-20P U.S.A. & Canada
PF32E	~ 50 lbs per hour	32 lbs.	2 (Dual)	208-240V	2900W 3800W	13.9/13.9 15.8/15.8	(2) 6-20P U.S.A. & Canada

OPTIONS:

- Interchangeable 16 lb. and 32 lb. baskets:

Small basket - SMBASKET10
Large basket - TMBASKET1632
Twin baskets - LGBASKET1632

- Fryer covers -
(For use only when fryer is not operational)
FRYERCOVER1016
FRYERCOVER32

Canada orders: Please specify
-C after the model number for
CSA plug

DIMENSIONS & SHIPPING INFORMATION

Freight Class **85**

Cartons are reinforced for shipping. The weight and dimensions of reinforced cartons are listed below and may vary from shipment to shipment.

Model	Foot Print	Overall Dimensions	Net Weight	Shipping Dimensions	Shipping Weight
PF10E	10.25" W x 16.5" L (26 cm x 42 cm)	18.5" L x 11.1" W x 15.25" H (47 cm x 28 cm x 39 cm)	16.8 lbs. (7.6 kg)	21.75" L x 15.25" W x 16.75" H (55 cm x 39 cm x 42.5 cm)	21 lbs. (9.2 kg)
PF16E	10.25" W x 16.5" L (26 cm x 42 cm)	18.5" L x 11.25" W x 17" H (47 cm x 28.5 cm x 43 cm)	19.2 lbs. (8.7 kg)	21.75" L x 15.25" W x 18.25" H (55 cm x 39 cm x 46 cm)	23 lbs. (10.3 kg)
PF32E	20.5" W x 16.5" L (52 cm x 42 cm)	18.5" L x 21.75" W x 17" H (47 cm x 55 cm x 43 cm)	29.2 lbs. (13.2 kg)	25.75" L x 22" W x 18" H (65 cm x 56 cm x 46 cm)	38 lbs. (30 kg)