



F-330BAK(-C)

**SELF-CONTAINED ICE MACHINE
BUILT-IN STORAGE BIN**



F-330BAK



F-330BAK-C

F-330BAK(-C)
08/28/25
Item # 13200K

Item #: _____
Project: _____
Qty: _____
AIA#: _____

W x D x H
24" x 26" x 39"*
*with 6" legs

Shipping Dimensions
33" x 25^{1/4}" x 38^{1/2}"


F-330BAK ★
Air-Cooled

F-330BAK-C ★
Air-Cooled



Features

- ▶ **Front breathing allows for easier fit into tight spaces**
- ▶ **Durable stainless steel exterior**
- ▶ **Environmentally friendly R290 hydrocarbon refrigerant**

- Stainless steel auger with greaseless bearing
- F-330BAK - Up to 331 lbs. of ice production per 24 hrs.
- F-330BAK-C - Up to 300 lbs. of ice production per 24 hrs.
- Built-in storage capacity of 2.7ft³/80 lbs.*
- Advanced CleanCycle24™ design 
- 2 second flush cycle every hour
- Convenient drop down door
- Front access for easier maintenance
- Removable air filters
- Equipped with 8 ft. cord with NEMA 5-15P Plug

Warranty:

3 Year Parts & Labor on entire machine. 5 Year Parts on Compressor; air-cooled condenser coil. Valid in United States, Canada, Puerto Rico and U.S. Territories. Contact factory for warranty in other countries.

*Rated in accordance with AHRI Standard 820(I-P). Capacity based on 100% of total volume x 30 lb/ft³ average density of ice.



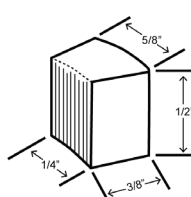
Condenser	Model	ICE PRODUCTION		WATER USAGE		ELECTRICAL						
		Air / Water Temp Lbs. per 24 hours 70°/50°F 90°/70°F		Potable Gal. per 100 lbs. 90°/70°F	Condenser Gal. per 100 lbs. 90°/70°F	kWh Used per 100 lbs. 90°/70°F	Min. Circuit/ Max. Fuse Size	Amperage	Voltage	Heat Rejection BTU/hr.	Refrigerant Charge Amount	Net / Ship Weight (lbs.)
Air	F-330BAK (Flaker) ★	331	275	12.0	N/A	4.29	15A	6.3A	115V/60/1	3,400	2.8 oz	147 / 178
Air	F-330BAK-C (Cubelet) ★	300	250	12.0	N/A	5.0	15A	6.3A	115V/60/1	3,400	2.8 oz	147 / 178

Cube Dimensions*

Flaked
F-330BAK



Cubelet
F-330BAK-C



* approximate size in inches, image not to scale

Operating Limits

- Ambient Temp Range 45 - 100°F
- Water Temp Range 45 - 90°F
- Water Pressure 10 - 113 PSIG
- Voltage Range 108-127V
- If GFCI is required, a GFCI breaker MUST be used in lieu of GFCI receptacle

Service

- Panels easily removed and all components accessible for service.
- Removable/cleanable air filter (Air-cooled model only)
- Allow 24" (61 cm) clearance at top for removal of auger.
- Appliance should not be located next to high heat producing equipment.

Plumbing

- Icemaker Water Supply Line: Minimum 1/4" Nominal ID Copper Water Tubing or Equivalent
- Icemaker Drain Line: Minimum 3/4" Nominal ID Hard Pipe or Equivalent

Hoshizaki reserves the right to change specifications without notice.



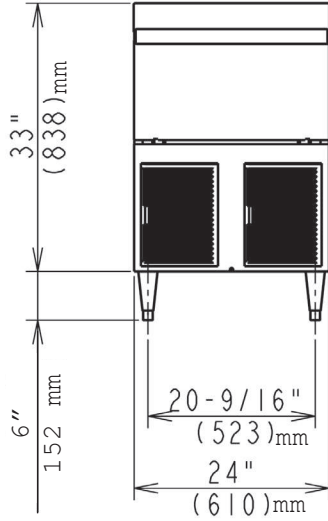
F-330BAK(-C)

**SELF-CONTAINED ICE MACHINE
BUILT-IN STORAGE BIN**

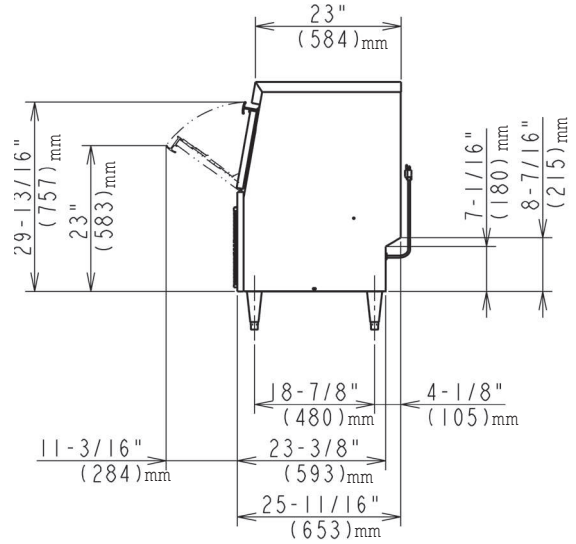
F-330BAK(-C)
08/28/25
Item # 13200K

inch
(mm)

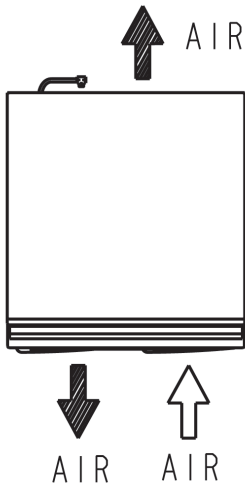
FRONT VIEW
AIR-COOLED



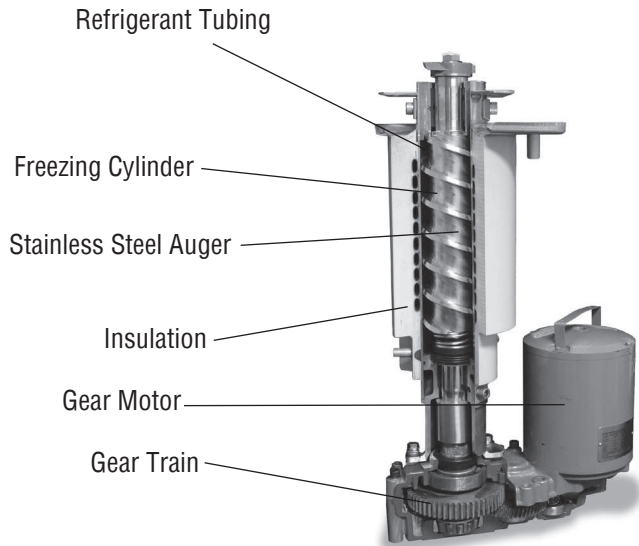
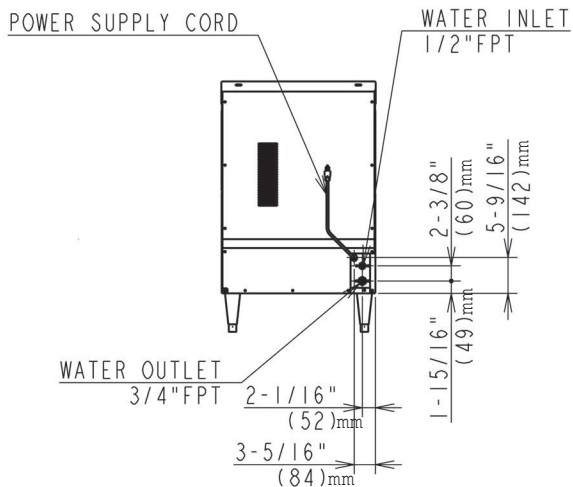
SIDE VIEW



TOP VIEW
AIR-COOLED



REAR VIEW
AIR-COOLED



EVAPORATOR