



# KM-520/660MRJZ

## SLIM-LINE MODULAR CRESCENT CUBER



KM-520/660MRJZ  
11/12/21  
Item # 13624

W x D x H  
22" x 27<sup>3/8</sup>" x 28"

**KM|EDGE**  
ICE MACHINE SERIES



### Remote Air-Cooled

- KM-520MRJZ ★
- KM-660MRJZ ★



## Features

- ▶ Individual crescent cube
- ▶ Factory-installed ultrasonic bin control can be adjusted on site
- ▶ Simple, one-hour cleaning process

- Durable construction with fewer parts
- Self-diagnostic programming automatically adjusts to changing conditions
- Snap fit parts for easy cleaning
- Stainless steel double-sided evaporator
- CycleSaver™ design
- Protected by H-GUARD Plus Antimicrobial Agent
- EverCheck™ alert system
- R-404A Refrigerant

### Available on Bins/Dispensers:

B-250SF	B-500/SF	B-800SF	B-1150SS	DB-130H
B-300SF	B-700SF	B-900SF	B-1300SS	DB-200H
				DM-200B

Top kit may be required. See Bin Spec Sheets.

### Warranty:

3 Year Parts & Labor on entire machine 5 Year Parts & Labor on evaporator  
5 Year Parts on Compressor; air-cooled condenser coil  
Valid in United States, Canada, Puerto Rico and U.S. Territories. Contact factory for warranty in other countries.

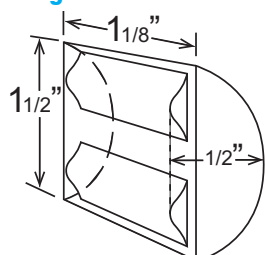
Shipping: (LxWxH) 33.5" x 25.88" X 34.6" Volume: 16.64ft<sup>3</sup>



Condenser	Model	ICE PRODUCTION		WATER USAGE		ELECTRICAL							
		Air / Water Temp Lbs. per 24 hours 70°/ 50°F	90°/ 70°F	Potable Gal. per 100 lbs. 90°/ 70°F	Condenser Gal. per 100 lbs. 90°/ 70°F	kWh Used per 100 lbs. 90°/ 70°F	Min. Circuit Amp - Max. Fuse/Breaker	Amperage	Voltage	Circuit Wires (including ground)	Heat Rejection BTU/hr.	Refrigerant Charge Amount	Net / Ship Weight (lbs.)
Remote	KM-520MRJZ ★	547	495	13.6	N/A	4.80	20A	12.05A	115V/60/1	3	6,200	2 lb. 4.7 oz. 4 lb. 2.7 oz.†	145 / 175
Remote	KM-660MRJZ ★	646	602	14.7	N/A	5.60	20A	16.1A	115V/60/1	3	8,100	2 lb. 4.7 oz. 4 lb. 2.7 oz.†	150 / 180

† (with condenser)

### KM Edge Cube Dimensions†



† approximate size in inches, image not to scale

### Operating Limits

- Ambient Temp Range 45 - 100°F
- Water Temp Range 45 - 90°F
- Water Pressure 10 - 113 PSIG
- Voltage Range 104 - 127V

### Service

- Panels easily removed and all components accessible for service.
- Removable/cleanable air filters. (Air-cooled model only)
- Allow 6" (15 cm) clearance at rear, sides, and top for proper air circulation and ease of maintenance/service.

### Plumbing

- Ice maker water supply line: minimum 1/2" nominal ID copper water tubing or equivalent
- Ice maker drain line: minimum 3/4" nominal ID hard pipe or equivalent

### Line Sets

- Line sizes for lengths up to 66': 1/4" LIQ and 3/8" DIS
- Line sizes for lengths greater than 66' to a maximum of 100': 3/8" LIQ and 1/2" DIS plus charge adjustment - add 16.5 oz. (468 g) of refrigerant to compensate for larger diameter line sizes and 0.4 oz. (11 g) for each foot over 66'.

### Water Filter

Please refer to water filter specification sheet for recommendations.

Hoshizaki reserves the right to change specifications without notice.



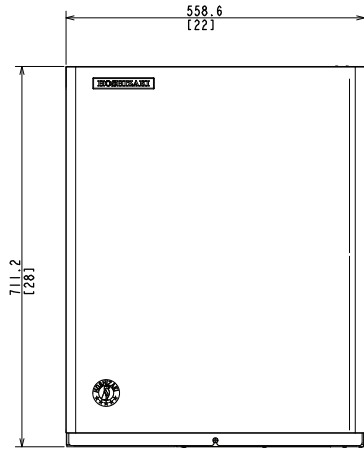
# KM-520/660MRJZ

## SLIM-LINE MODULAR CRESCENT CUBER

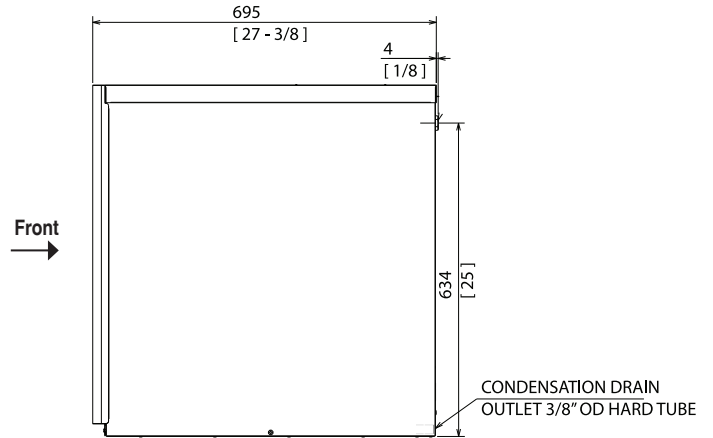


KM-520/660MRJZ  
11/12/21  
Item # 13624

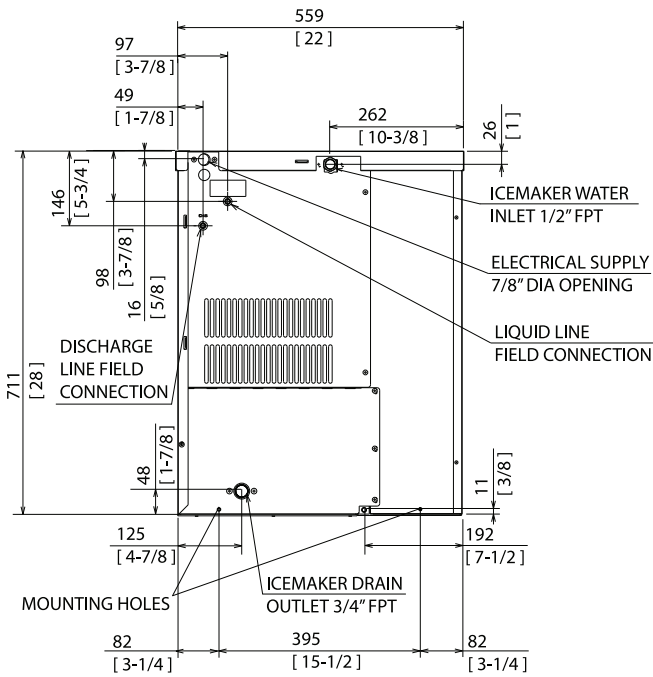
FRONT VIEW



SIDE VIEW



REAR VIEW



### URC-5FZ Remote Condenser (Sold Separately)

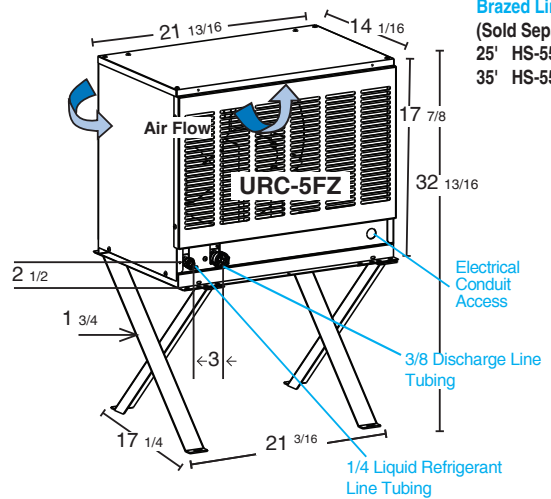
(W x D x H) 21<sup>13/16</sup> x 14<sup>1/16</sup> x 32<sup>13/16</sup>

For Use with KM-520MRJZ and KM-660MRJZ

### Brazed Line Sets (Sold Separately)

25' HS-5587

35' HS-5588



Voltage supply for ice maker and condensing unit are separate.

BOTTOM VIEW

