



S-SERIES RESTAURANT RANGE

S48EE - 8 Open Burners, 2 Space Saver Ovens

S48DC - 8 Open Burners, 1 Standard oven, 1 Cabinet

S48AC - 8 Open Burners, 1 Convection oven, 1 Cabinet



(S48EE shown)



Southbend is a leader in the commercial cooking industry. Since 1898 Southbend has been dedicated to providing the highest quality and most innovative cooking equipment to customers in all facets of the food service industry. Customers choose Southbend due to the reliable performance, endless versatility and pricing value of the equipment. Southbend products are engineered to perform and built to last.

STANDARD EXTERIOR FEATURES

- 48-5/8" wide open top with eight (8) 28,000 BTU NAT (24,000 BTU LP) **PATENTED**, one-piece cast iron, non-clog burners with Lifetime Warranty.
- Stainless steel front, sides and removable shelf.
- 4" Stainless steel front rail with closed, welded end caps.
- Eight (8) removable, cast iron grate tops (rear holds up to 14" stock pot).
- Two (2) removable, one-piece crumb drawers under burners.
- Metal knobs w/ red stripe.
- Hinged, lower valve panel.
- Quadrant spring doors with ergonomic chrome handle.
- 6" stainless steel, adjustable legs.

SPACE SAVER OVEN FEATURES (EE)

- Two (2) 35,000 BTU space saver ovens with snap action thermostat adjustable for 175°F to 550°F.
- U-shaped heavy duty oven burner.
- Equipped with flame failure safety device.
- Large 19-1/2" wide X 26-1/2" deep oven with all oven cavity parts enameled.
- Four sides and top of oven insulated with heavy, self-supporting block type rock wool with oven baffle assembly.
- 2-position rack guides with one removable rack.
- Factory installed pressure regulator.

STANDARD OVEN FEATURES (D)

- 35,000 BTU standard oven with snap action thermostat adjustable for 175°F to 550°F.
- U-shaped heavy duty oven burner.
- Equipped with flame failure safety device.
- Large 26" wide X 26-1/2" deep oven with all oven cavity parts enameled.
- Four sides and top of oven insulated with heavy, self-supporting block type rock wool with oven baffle assembly.
- 2-position rack guides with one removable rack.

CONVECTION OVEN FEATURES (A)

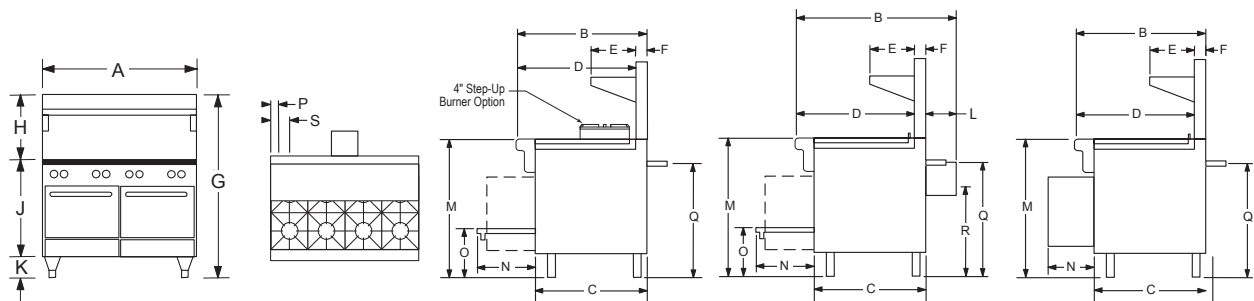
- 35,000 BTU standard oven with snap action thermostat adjustable for 175°F to 550°F.
- U-shaped heavy duty oven burner.
- Equipped with flame failure safety device.
- Large 26" wide X 26-1/2" deep oven with all oven cavity parts enameled.
- Four sides and top of oven insulated with heavy, self-supporting block type rock wool with oven baffle assembly.
- 1/2 hp, 1710 rpm, 60 cycle, 115V AC high efficiency, permanent split phase motor.
- On/Off switch to allow CO base to operate as a standard oven.
- 5-position rack guides with two (2) removable racks.

CABINET BASE FEATURES (C)

- Aluminized cabinet base. Optional, no-charge doors that open from the center available.



1100 Old Honeycutt Road, Fuquay-Varina, NC 27526
Phone: (919)-762-1000 • Fax: (800)-910-9915 • URL: www.southbendnc.com



Dimensions - in(mm)

MODEL	EXTERIOR											COOK TOP	DOOR OPENING	OVEN BOTTOM	3/4" GAS CONN.		ELECTRIC	
	Width A	Depth B	C	D	E	F	G	H	J	K	L	M	N	O	P	Q	R	S
S48EE	48.63" (1235)	34.00" (864)	29.75" (756)	31.00" (787)	10.00" (254)	2.75" (70)	59.50" (1511)	22.50" (572)	31.00" (787)	6.00" (152)	-	37.00" (940)	15.50" (394)	13.00" (330)	3.25" (83)	30.25" (768)	-	-
S48DC	48.63" (1235)	34.00" (864)	29.75" (756)	31.00" (787)	10.00" (254)	2.75" (70)	59.50" (1511)	22.50" (572)	31.00" (787)	6.00" (152)	-	37.00" (940)	15.50" (394)	13.00" (330)	3.25" (83)	30.25" (768)	-	-
S48AC	48.63" (1235)	41.75" (1060)	29.75" (756)	31.00" (787)	10.00" (254)	2.75" (70)	59.50" (1511)	22.50" (572)	31.00" (787)	6.00" (152)	8.25" (210)	37.00" (940)	15.50" (394)	13.00" (330)	3.25" (83)	30.25" (768)	24.00" (610)	6.00" (152)

MODEL	OVEN INTERIOR			CRATE SIZE			CUBIC VOLUME	CRATED WEIGHT
	WIDTH	DEPTH	HEIGHT	WIDTH	DEPTH	HEIGHT		
S48EE	19.50" (495)	26.50" (673)	14.00" (356)	67.00" (1702)	45.50" (1158)	75.00" (1905)	132.3 cu. ft 3.75 cu.m.	860 lbs. 390 kg.
S48DC	26.00" (660)	26.50" (673)	14.00" (356)	67.00" (1702)	45.50" (1158)	75.00" (1905)	132.3 cu. ft 3.75 cu.m.	860 lbs. 390 kg.
S48AC	26.00" (660)	24.00" (610)	14.00" (356)	67.00" (1702)	45.50" (1158)	75.00" (1905)	132.3 cu. ft 3.75 cu.m.	860 lbs. 390 kg.

UTILITY INFORMATION

Gas Type	BURNERS (BTU/EACH)			
	OPEN TOP BURNER	SPACE SAVER OVEN	STANDARD OVEN	CONVECTION OVEN
Natural	28K	35K	35K	35K
LP	24K	35K	35K	35K

- Each unit has a 3/4", male, rear gas connection.
- Minimum inlet pressure - Natural Gas is 7" W.C.
- Propane Gas is 11" W.C.
- Each convection oven is standard 115/60/1 furnished with 6' cord with 3-prong plug. Total max amps is 5.9.
- Optional - 208/60/1, 50/60/1 phase. Supply must be wired to junction box with terminal block located at rear. Total max amps is 2.7.

- Check local codes for fire, installation and sanitary regulations.
- For installation on combustible floors (with 6" high legs or casters) and adjacent to combustible walls, allow 10" clearance.
- Clearance to noncombustible construction is 0" for all tops and bases.
- If using Flex-Hose, the I.D. should not be smaller than the I.D. of the manifold of the unit to which it is being connected.
- If casters are used, a restraining device should be used to eliminate undue strain on the flex hose.
- Install under vented hood.
- If the unit is connected directly to the outside flue, an A.G.A. approved down draft diverter must be installed at the flue outlet of the oven.

BIDDING SPECIFICATIONS

The unit shall be a 48-5/8" wide, S-Series Restaurant Range with eight (8) 28,000 BTU NAT (24,000 BTU LP) open top burners with eight (8) removable cast iron grate tops. The exterior of the unit shall be constructed of stainless steel and have a 4" stainless steel front rail with closed, welded end caps. The unit shall have 6" stainless steel, adjustable legs. The unit shall come with a 22.5" high stainless steel flue riser with single shelf. The unit shall come with a factory installed regulator.

EE - The unit shall have two (2) 35,000 BTU space saver ovens with snap action thermostat, adjustable from 175° F to 550° F. The interiors shall be enameled on both sides and measure 19-1/2" wide X 26.5" deep X 14" high, and includes 2-position rack guides with one removable rack per oven.

DC - The unit shall have a 35,000 BTU standard oven with snap action thermostat, adjustable from 175° F to 550° F. The interior shall be enameled on both sides and measure 26" wide X 26.5" deep X 14" high, and includes 2-position rack guides with one removable rack per oven. The unit shall have an aluminized cabinet base without doors. Optional, no-charge doors that open from the center available.

AC - The unit shall have a 35,000 BTU convection oven with snap action thermostat, adjustable from 175° F to 550° F. The unit shall include a 1/2 hp split phase motor with on/off switch to allow CO base to operate as a standard oven. The interior shall be enameled on both sides and measure 26" wide X 24" deep X 14" high, and includes 5-position rack guides with two removable racks per oven. The unit shall have an aluminized cabinet base without doors. Optional, no-charge doors that open from the center available.

OPTIONS AND ACCESSORIES

- | | | |
|--|---|--|
| <input type="checkbox"/> Casters - all swivel - front with locks | <input type="checkbox"/> Restraining device | <input type="checkbox"/> Cabinet base doors (No Charge) |
| <input type="checkbox"/> 10" flue riser | <input type="checkbox"/> Extra oven racks | <input type="checkbox"/> Various salamander & cheesemelter mounts available (Please contact factory) |
| <input type="checkbox"/> 3/4" quick disconnect with flexible hose - complies with ANSI Z 21.69 (Specify 3ft, 4ft or 5ft) | <input type="checkbox"/> Auxiliary griddle plates | |

NOTICE:

Southbend has a policy of continuous product research and improvement. We reserve the right to change specifications and product design without notice. Such revisions do not entitle the buyer to corresponding changes, improvements, additions or replacements for previously purchased equipment.

INTENDED FOR COMMERCIAL USE ONLY. NOT FOR HOUSEHOLD USE.



1100 Old Honeycutt Road, Fuquay-Varina, NC 27526
Phone: (919)-762-1000 • Fax: (800)-910-9915 • URL: www.southbendnc.com